

Understanding the Official San Francisco Bike Route System



Sheet signs with a green background indicate local routes.
Sheet signs with a blue background indicate city routes.

- 1 Numbered bike routes are part of the Official San Francisco City Bike Route System
- 2 Even numbers indicate east-west routes
- 3 Odd numbers indicate north-south routes
- 4 High numbers indicate connector routes
- 5 25 indicates connector routes

- 6 Bike Path (dedicated off-street - usually paved - bike path)
- 7 Bike Lane (dedicated bike lane on roadway edge)
- 8 Wide Curb Lane Bike Route (Wider roadway - bicyclists may be able to ride outside the path of motor vehicles travel)
- 9 Bike Route (bikes and cars share the same - often narrow - roadway)
- 10 Arrows indicate travel in one direction
- 11 Hiking Trails

Golden Gate Bridge
Bicycles across 24 hours
East side path: Weekdays 6:30 am - 3:30 pm
West side path: Weekdays, weekends and holidays 5:30 pm - 6:30 am
No pedestrians allowed on west side path at any time

Madison Drive is closed to automobiles on Saturdays
Madison Drive is closed to vehicular traffic on Sundays and holidays

San Francisco Bike Map & Walking Guide

How to use this San Francisco Bike Map & Walking Guide
This map and guide is designed to help you choose biking, walking, and even running routes to get around in San Francisco on the least hilly terrain.

Numbered routes shown on the map are the Official San Francisco Bike Routes, and generally avoid steep hills and heavy traffic. Bike paths, bike lanes, and shared roadway designations (see legend) are designed to help you choose a route appropriate to your skill, familiarity with the City, and destination.

Non-numbered routes (paths, lanes and shared roadway/wide curbs lanes) are popular alternatives to the Official Routes. Always use caution.

Street Grades
The grades of all San Francisco streets are color coded on this map according to their slope. The darker red the color, the steeper the slope. If an easy route is desired, avoid the red. If you desire a more challenging and varied route, the steeper terrain is clearly indicated.



Bicycle Shops
Symbol indicates location of San Francisco bicycle shops. Most bicycle shops provide repairs as well as spare parts. Several shops in the vicinity of Golden Gate Park and elsewhere also provide rental bicycles. Please consult the telephone directory under "Bicycles" for information concerning hours of operation and services provided by specific bicycle shops.

Vista Points
Symbol indicates location of San Francisco bicycle shops.

BART line and stations
Symbol indicates location of San Francisco bicycle shops.

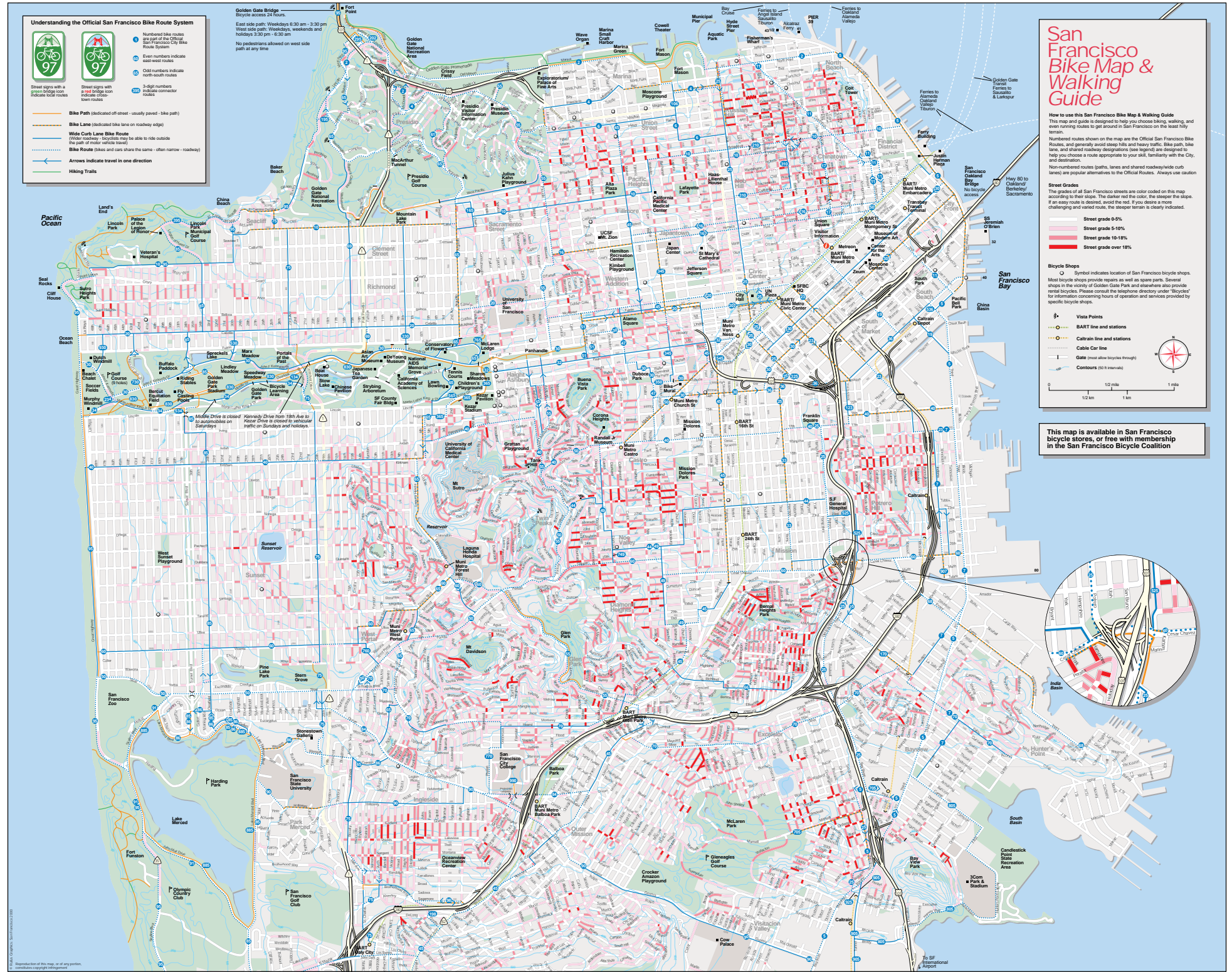
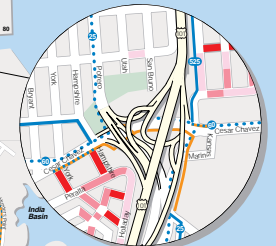
Caltrain line and stations
Symbol indicates location of San Francisco bicycle shops.

Cable Car line
Symbol indicates location of San Francisco bicycle shops.

Gate (most allow bicycles through)
Symbol indicates location of San Francisco bicycle shops.

Contours (20 ft intervals)
Symbol indicates location of San Francisco bicycle shops.

This map is available in San Francisco bicycle stores, or free with membership in the San Francisco Bicycle Coalition



Reproduction of this map, or of any portion, without the copyright owner's permission is prohibited.